

US Army Corps of Engineers
   
 Jacksonville District
   
**SAFETY ON THIS JOB**
  
 DEPENDS ON YOU

---

DEPARTMENT OF THE ARMY
   
 JACKSONVILLE DISTRICT, CORPS OF ENGINEERS
   
 JACKSONVILLE, FLORIDA

Check By: GHR
   
 Designed By: WRM
   
 Drawn By: WRM
   
 Date: AUG 2020

---

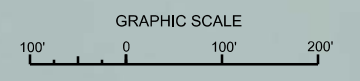
20-137A-CON-08.DGN
   
 20-137A-CON-09.DGN
   
 20-137A-CON-10.DGN
   
 20-137A-CON-11.DGN
   
 20-137A-CON-12.DGN
   
 20-137A-CON-13.DGN
   
 20-137A-CON-14.DGN
   
 20-137A-CON-15.DGN
   
 20-137A-CON-16.DGN
   
 20-137A-CON-17.DGN
   
 20-137A-CON-18.DGN
   
 20-137A-CON-19.DGN
   
 20-137A-CON-20.DGN

SAN JUAN HARBOR
   
 SAN JUAN, PUERTO RICO
   
**HYDROGRAPHIC EXAM SURVEY FY20**
  
**30 THRU 56-FOOT PROJECT**
  
 STA. 87+00 THRU STA. 97+00 GRAVING DOCK CHANNEL STA. 0+00 THRU STA. 17+13.33 PUERTO NUEVO CHANNEL

---

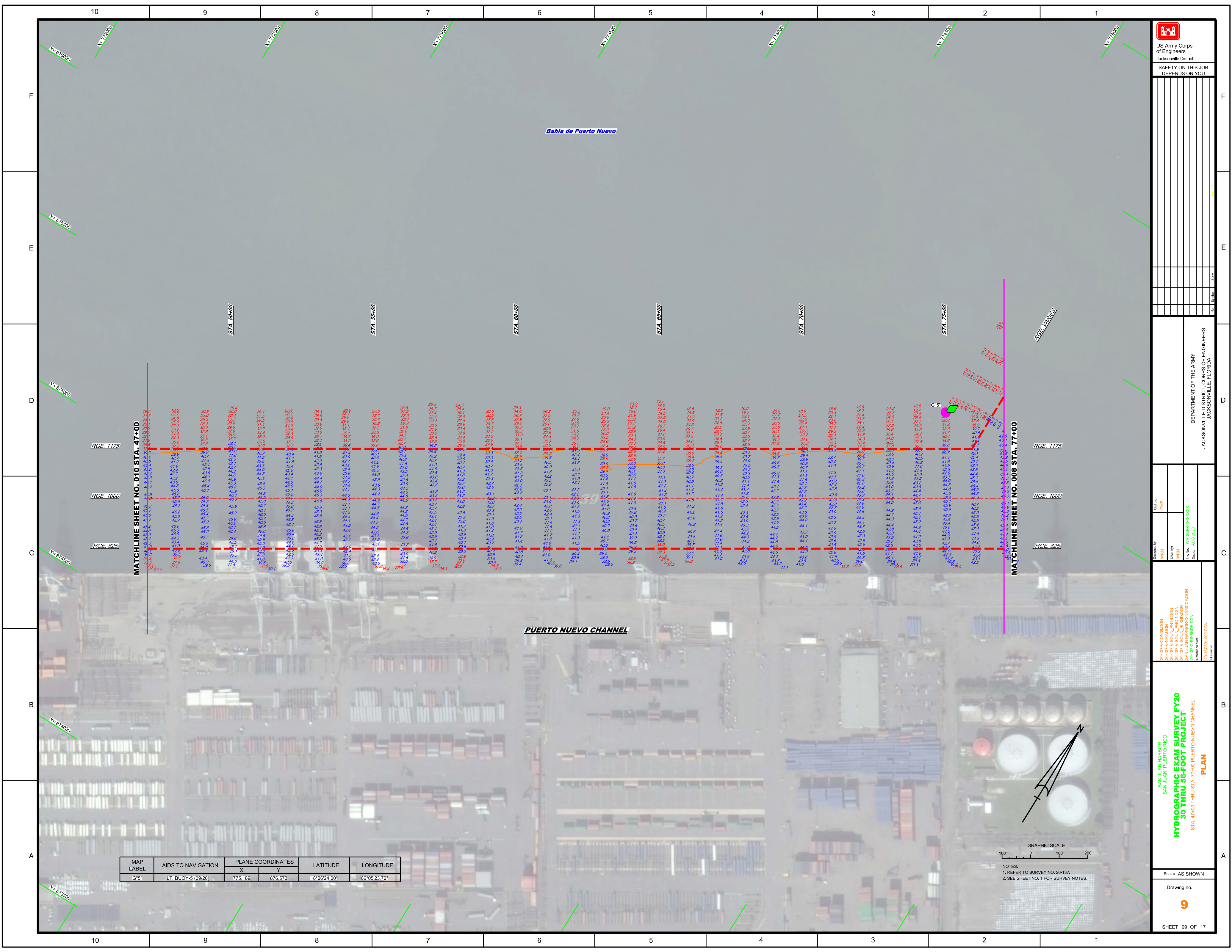
Scale: AS SHOWN
   
 Drawing no.
   
**8**
  
 SHEET 08 OF 17

MAP LABEL	AIDS TO NAVIGATION	PLANE COORDINATES		LATITUDE	LONGITUDE
		X	Y		
R*4	LT. BUOY-4 (0920)	775.242	877.598	18°26'34.15"	66°05'23.14"
G*5	LT-5 (0920)	776.464	877.731	18°26'35.46"	66°05'10.45"



NOTES:
   
 1. REFER TO SURVEY NO. 20-137.
   
 2. SEE SHEET NO. 1 FOR SURVEY NOTES.

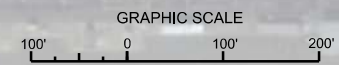





Bahia de Puerto Nuevo

PUERTO NUEVO CHANNEL

MAP LABEL	AIDS TO NAVIGATION	PLANE COORDINATES		LATITUDE	LONGITUDE
		X	Y		
G*5	LT. BUOY-5 (09/20)	775.189	876.573	18°26'24.00"	66°05'23.72"



NOTES:  
 1. REFER TO SURVEY NO. 20-137.  
 2. SEE SHEET NO. 1 FOR SURVEY NOTES.



US Army Corps of Engineers  
 Jacksonville District

**SAFETY ON THIS JOB  
 DEPENDS ON YOU**

---

DEPARTMENT OF THE ARMY  
 JACKSONVILLE DISTRICT, CORPS OF ENGINEERS  
 JACKSONVILLE, FLORIDA

---

San Juan Harbor  
 San Juan, Puerto Rico

**HYDROGRAPHIC EXAM SURVEY FY20  
 30 THRU 56-FOOT PROJECT**

STA. 47+00 THRU STA. 77+00 PUERTO NUEVO CHANNEL

**PLAN**

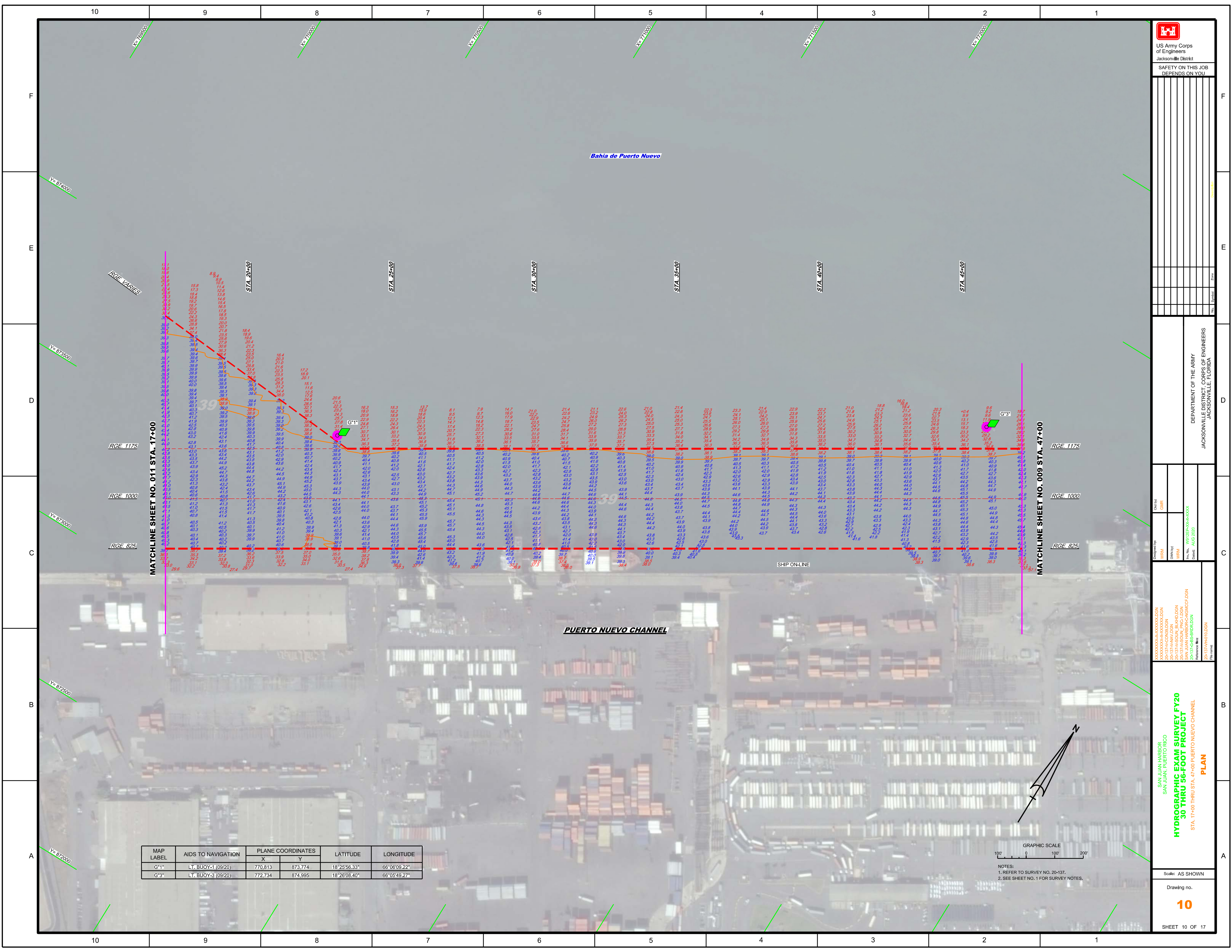
---

Scale: AS SHOWN

Drawing no. **9**

SHEET 09 OF 17





US Army Corps  
of Engineers  
Jacksonville District  
SAFETY ON THIS JOB  
DEPENDS ON YOU

---

Drawn by: GHR  
Checked by: GHR  
Designed by: GHR  
Title: HYDROGRAPHIC EXAM SURVEY FY20  
DATE: AUG 2020

DEPARTMENT OF THE ARMY  
JACKSONVILLE DISTRICT, CORPS OF ENGINEERS  
JACKSONVILLE, FLORIDA

---

Scale: AS SHOWN

Drawing no. **10**

SHEET 10 OF 17

MAP LABEL	AIDS TO NAVIGATION	PLANE COORDINATES		LATITUDE	LONGITUDE
		X	Y		
G1*	LT. BUOY-1 (09/20)	770,813	873,774	18°25'56.33"	66°06'09.22"
G3*	LT. BUOY-3 (09/20)	772,734	874,995	18°26'08.40"	66°05'49.27"

GRAPHIC SCALE  
100' 0 100' 200'

NOTES:  
1. REFER TO SURVEY NO. 20-137.  
2. SEE SHEET NO. 1 FOR SURVEY NOTES.



MAP LABEL	AIDS TO NAVIGATION	PLANE COORDINATES		LATITUDE	LONGITUDE
		X	Y		
R-6	LT. BUOY-8 (09/20)	768,481	875,501	18°26'13.49"	66°06'33.41"
G-7	LT. BUOY-7 (09/20)	768,991	874,731	18°26'05.85"	66°06'28.13"
G-9	LT. BUOY-9 (09/20)	769,844	873,831	18°25'56.91"	66°06'19.29"

US Army Corps of Engineers  
Jacksonville District

SAFETY ON THIS JOB  
DEPENDS ON YOU

DEPARTMENT OF THE ARMY  
JACKSONVILLE DISTRICT, CORPS OF ENGINEERS  
JACKSONVILLE, FLORIDA

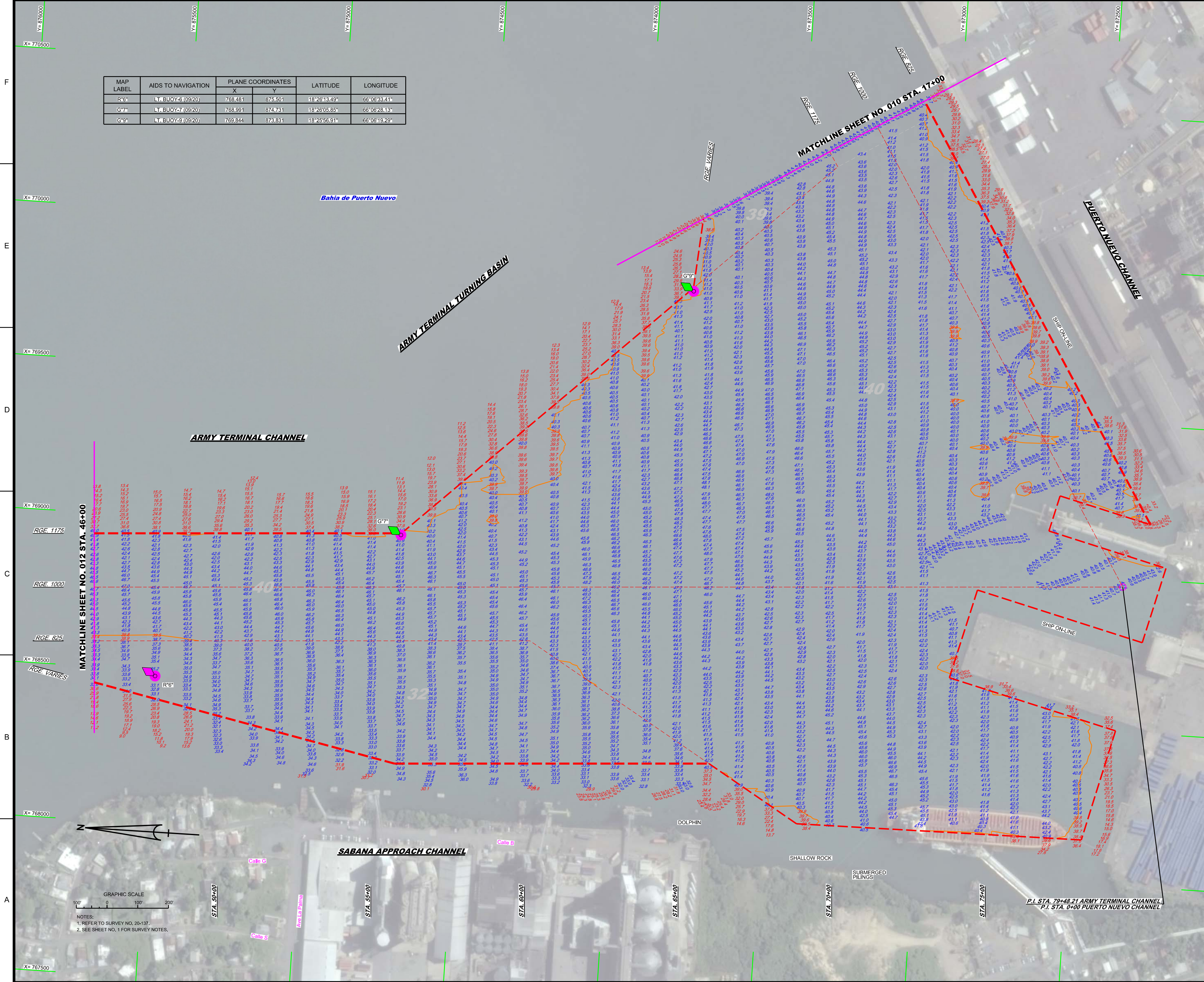
Client: GHR  
Engineer: WRM  
DWM: WRM  
WPM: WRM  
Date: 08/20/2020  
Drawing No: AUG 2020

Project: HYDROGRAPHIC EXAM PROJECT FY20  
30 THRU 56-FOOT PROJECT  
STA. 46+00 THRU STA. 79+48.21 ARMY TERMINAL CHANNEL AND STA. 0+00 THRU STA. 17+00 PUERTO NUEVO CHANNEL

Scale: AS SHOWN

Drawing no. 11

SHEET 11 OF 17



NOTES:  
1. REFER TO SURVEY NO. 20-137.  
2. SEE SHEET NO. 1 FOR SURVEY NOTES.

PLAN



MAP LABEL	AIDS TO NAVIGATION	PLANE COORDINATES		LATITUDE	LONGITUDE
		X	Y		
R-4	LT. BUOY-4 (09/20)	768,351	877,278	18°26'31.11"	68°06'34.74"
G-5	LT. BUOY-5 (09/20)	768,898	876,921	18°26'27.55"	68°06'29.05"

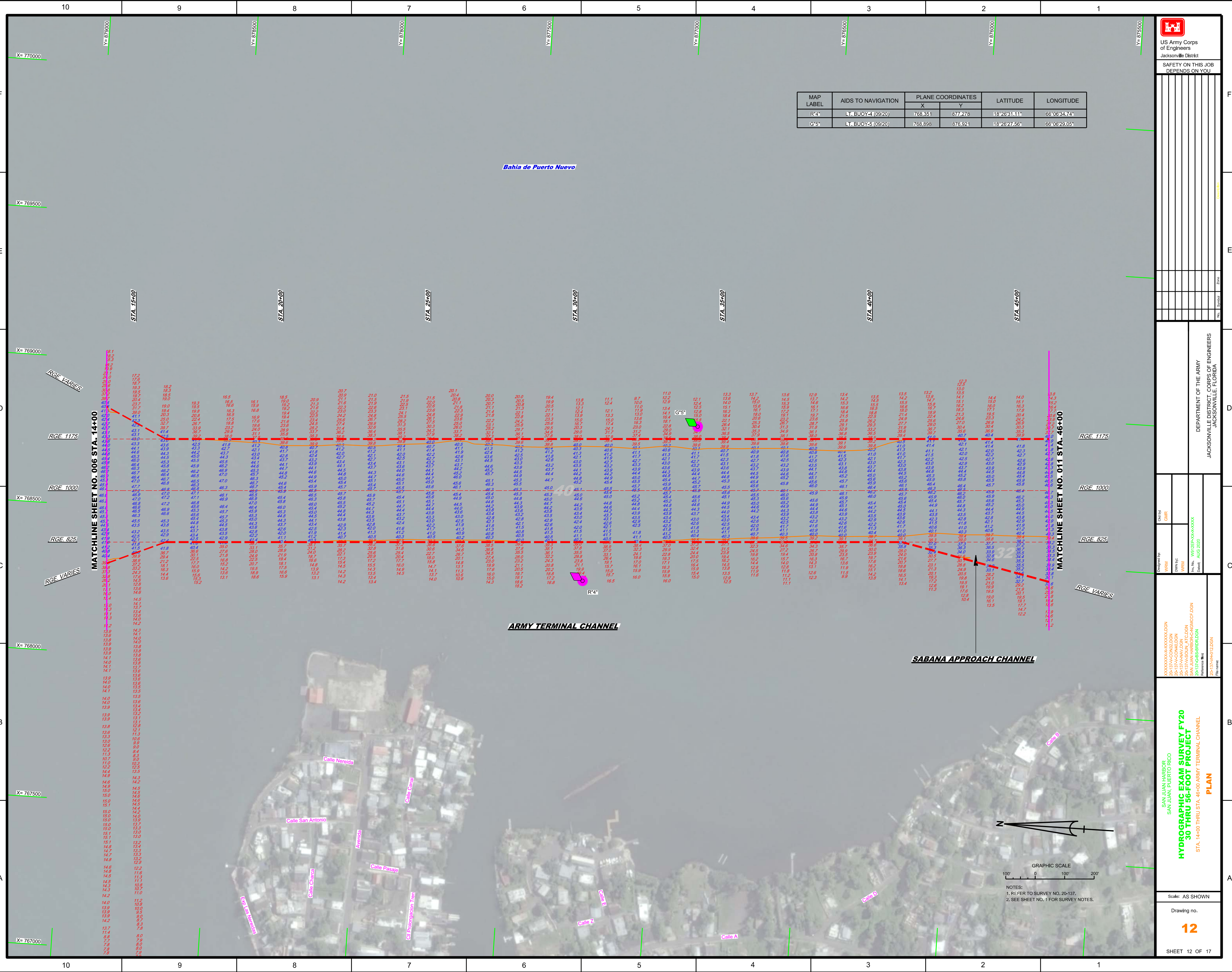
Bahia de Puerto Nuevo

MATCHLINE SHEET NO. 006 STA. 14+00

MATCHLINE SHEET NO. 011 STA. 46+00

ARMY TERMINAL CHANNEL

SABANA APPROACH CHANNEL



DESIGNED BY: **WRM**  
 CHECKED BY: **GHR**  
 DRAWN BY: **WRM**  
 DATE: **AUG 2020**  
 PROJECT: **HYDROGRAPHIC EXAM SURVEY FY20 30 THRU 56-FOOT PROJECT**  
 STA. 14+00 THRU STA. 46+00 ARMY TERMINAL CHANNEL  
 PLAN  
 SHEET 12 OF 17